



匡智元朗晨曦學校

學校地址：元朗錦綉花園荔枝北路133號
電郵：yuenlong@hongchi.org.hk

電話：2482 2820 傳真：2482 0718
網址：www.hcmisyl.edu.hk

信心、愛心 我們的校訓 恆心、開心 我們的願景

我們的學生都能自立自決、必展所長，回饋社會。
我們的學校能成為培育教導智障及自閉症兒童人才的搖籃。

編者的話 *Editor's Preface*

時間飛逝，不經不覺，元曦已經有四十年的歷史。元曦校舍由元朗邨舊址，搬到現處的錦綉花園；學校也由昔日的數班，逐漸演變為現今十二班的規模。一花一草、一景一物、一點一滴均印證著歲月的痕跡。當中的事或人，隨著歲月的變遷，或許已有不同，但當中的元曦情會繼續承傳下去，並繼續以為智障學童提供優質教育及發揮學生的潛能為目標。在元曦四十週年這個特別的日子裡，讓我們一起回望過去，共同回憶元曦過去值得紀念的特別大事，一起認識「元曦家」。

Time flies and it has been four decades since the foundation of Hong Chi Morninglight School, Yuen Long (YML). The school moved from the old campus to Fairview Park. The school also developed from a few classes to 12 classes. Every single place and every little bit here shows the traces of time. In the course of time, things and people here may change, but the love of YML and the mission of realising students' potential are passed down. In this exceptional moment, let's look back and reminisce the good old days of this family.

四十週年校慶活動預告

Celebratory Activities on 40th Anniversary

校慶活動第一炮：

Activity 1:

「感恩珍惜.積極樂觀展
自信.四十載元曦愛」
填色及繪畫創作比賽!

“Four decades of YML with gratitude,
optimism and confidence” Coloring
and Painting Competition



校慶活動第二炮：

Activity 2:



「正向校園校慶日暨嘉年華」

Positive School Anniversary Celebration cum Carnival

校慶活動第三炮：

Activity 3:

「感恩珍惜.積極樂觀展自信.四十載元曦愛」
攝影比賽!

“Four decades of YML with gratitude, optimism
and confidence” Photography Competition



元曦四十載大事回顧

Those Days and Today



舊校外觀

The outer appearance of the old campus



1981年本校開辦，校舍位於元朗邨(已拆卸)第五座地下。學校開辦時學生只有40人，教職員共10.5人。「元朗邨臨時校舍」狹小，每個課室面積不足二百平方呎，學校亦沒有籃球場或雨天操場。為解決輪候學生日增之問題，遂於1983年12月開始提供「初修班」(後易名「外展輔導班」)服務課程；教師每星期要上門到學生家中授課，而學生則每星期返校一次，以紓緩學額之不足。

The school was founded in 1981 at Block 5 of Yuen Long Estate (demolished) with 40 students and 10.5 staff. The temporary school campus in Yuen Long Estate was so small that each classroom was less than 200 sq. feet and there wasn't any basketball court or covered playground. To solve the problem of students' long waiting time, the school started offering Orientation Classes (later renamed as Outreaching Counselling Classes) in December 1983. Teachers went to students' homes every week while students went to school once a week to meet the needs of the community.

外展輔導班

Outreaching Counselling Classes



學校開放日

School Open Day



第一年聖誕聯歡會

1st Christmas Party



坳頭外貌

The outer appearance of the campus in Au Tau



1991年本校於元朗坳頭開辦分校，將原有之「外展輔導班」學生正式收錄為全日制學生。1991年11月錦綉花園校舍地盆正式移交予承建商，建校地盆工作正式動工。1992年8月位於錦綉花園之新校舍竣工，正式移交，為學生提供更舒適的校舍環境。

The school opened a branch in Au Tau in 1991. Students originally in Outreaching Counselling Classes were admitted as full-time students. The site in Fairview Park was handed over to contractors and the construction commenced in November 1991. The construction was completed in August 1992 and offered a more comfortable school environment for students.

建築初期的錦綉花園新校地盆

The construction site of Fairview Park



初建成的錦綉花園校舍

The newly-completed campus in Fairview Park



元曦四十載大事回顧 *Those Days and Today*



港督彭定康夫人主持
新校舍落成開幕典禮

Opening Ceremony of the new campus



1993年5月舉行新校舍落成開幕暨開放日。

九十至千禧年代，學校發展漸具規模及完善，學校活動更多元及豐富。2004年「學校改善工程」展開，2005年11月新翼建成，增設禮堂、多個特別室及空中花園，提供一個環境更寬敞、設備更完善的校舍，讓學生在更舒適的環境下學習。

The new school campus was completed and the opening ceremony cum open day was held in May 1993. From the 1990s to the Millennials, the school gradually developed into a large-scale and comprehensive school and organised diverse and broad activities. The school improvement project started in 2004 and the new annexe with hall, special rooms, and roof garden was completed in November 2005. The completion of the project offered a more spacious and better-equipped campus for students to learn more comfortably.

2001年舉辦
二十週年開放日

20th Anniversary Open Day in 2001



1996年舉行
十五週年開放日

15th Anniversary Open Day in 1996



昔日的親子園

The demolished garden



2020年設備俱全的
感統室為學生提供
感統訓練

The well-equipped Sensory Integration Room offers sensory integration training for students



隨著學生人數漸增，學校也逐步增添了
不少設施，讓學生學習漸趨完善。

With an increasing number of students, more facilities were gradually installed to further improve students' learning.

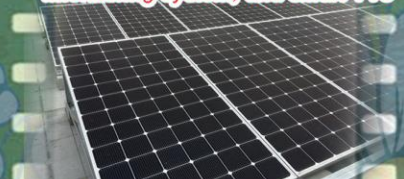
2020年健身區配備了
多項運動器材，訓練
學生的體能

Sports equipment is equipped in the fitness area to train students' fitness



2020年安裝太陽能
發電系實時數據採集和
監察系統及智能電視

Solar energy generation system is installed with real-time data collection monitoring system, and smart TVs





正向校園 Positive School

為培育元職學生建立積極的人生觀及價值觀，增加面對困難的抗逆力，本校把「建立正向校園」納入學校2020-2023年度的發展計劃。本學年更以「感恩珍惜、積極樂觀展自信」為主題，營造正向校園氛圍，透過有系統的校本策略、措施及活動，並配合學校全方位的合作，培養學生的正面情緒、正向人際關係、投入感、成就感、身心健康及建立正確積極的人生觀及價值觀，使學生成為一個具有信心、愛心、恆心及常開心的「元職人」。

本校成立「正向校園小組」，於正規課程(如：德育及公民課程)及非正規課程(如：課外活動、全方位活動、聯課活動及班級經營等)滲透正向教育元素。另外，亦透過學校環境設置、舉辦家長/教職員講座和親子工作坊等，協助各持份者學習和實踐正向教育，以促進學生、教師、家長和學校共同塑造正向校園文化，建立和諧校園。

"Launching Positive School" is included in the School Development Plan 2020-2023 to cultivate students' positive attitudes and values, and boost their resilience. Theming as "Expressing gratitude, to cherish, be proactive, optimistic and confident", the school aims to create a "positive school" ethos this year. Systematic school-based strategies, measures, and activities are introduced together with the joint effort of stakeholders. Positive emotions, positive relationships, devotion, accomplishment, and the physical and mental health of students will be nurtured, while correct and positive attitudes and values will be strengthened. It is expected that our students can flourish and face pressures and challenges positively with confidence, care, perseverance, and joy.

The school established a working group on "Positive School" and permeated elements of positive education into the regular curricula (e.g. moral and civil education) and irregular activities (e.g. extra-curricular activities, life-wide activities, joint-classes activities, class management, etc.). Through school settings, parent/staff talks, and parent-child workshops, stakeholders can learn and practise positive education which promotes collaboration in creating a "Positive School" ethos and establishing a harmonious school culture.

本校「正向校園」三年發展目標 3-Year Development Target in "Positive School"

學校方面：School

- 建立校園欣賞、感恩、健康及關愛文化
- 改善學校環境，營造一個正向、關愛及健康的校園
- Establish an appreciating, thankful, healthy and caring school culture.
- Improve the school environment to create a positive, caring, and healthy campus.

家長方面：Parent

- 舉辦不同的「正向」家長講座，讓家長認識正向教育，支援家長抗逆的正面心理素質及建立正向積極的家庭動力，讓家長在家實踐正向教育。
- 舉辦正向家長管教工作坊，讓家長認識管教子女、與子女溝通及相處的技巧，改善家庭溝通問題。
- 透過不同的「正能量」親子遊戲或活動，營造正面關係，改善親子關係及提升親子效能。
- Organise talks for parents on "Positiveness" to introduce positive education. Enhance parents' psychological quality and cultivate positive family motivation to encourage the practice of positive education at home.
- Organise positive parenting workshops to introduce the skills on parenting and communication with children which alleviate the problems of communication.
- Improve parent-child relationships and enhance efficiency through games and activities with "positive energy".

學生方面：Student

- 培養學生正面積極價值觀。
- 加強學生的正向情緒/情緒管理，改善情緒行為及提升抗逆力。
- 建立正面形象，提升個人自信及成就感。
- 舉辦多元化的活動，引導學生建立健康的生活習慣及態度。
- Cultivate students' positive values.
- Strengthen students' positive emotions/ emotion management to improve their emotional behaviours and enhance their resilience.
- Build positive images to enhance students' confidence and accomplishment.
- Organise diverse activities to guide students towards healthy lifestyle and attitude.

教職員方面：Staff

- 舉辦不同的講座或專業培訓(如：正向教師培訓)，提升教職員對正向教育的知識及建立正向教育應用技巧。
- 舉辦不同的教職員的團體活動，建立正向團隊、減緩教師的工作壓力及鞏固團隊正面能量/動力。
- Organise talks and professional training (e.g. positive teacher training) to enhance literacy in positive education and cultivate staff's skills in applying positive education.
- Organise group activities for staff to build a positive team, relieve teachers' pressure, and consolidate positive motivations.

正向校園 Positive School

什麼是正向教育？

「正向教育」源自正向心理學，目標是讓學校群體以內所有成員均能活得豐盛，以達至健康及幸福。本校推展「正向教育」，希望能發展學生的個人品格強項及發揮個人的長處和潛能，為學生建立自信心及正向情緒，並增強學生的幸福感、抗逆力，使他們能積極面對問題，從而擁有圓滿、快樂的人生。

Having its roots in Positive Psychology, Positive Education aims to enable all the school members to have a healthy and happy life. The promotion of "Positive Education" in our school aims to develop students' character strengths and unleash their strengths and potentials. Developing students' confidence and positive emotions enhance their well-being and resilience which allow them to face challenges positively and thus achieve a flourishing and happy life.

本校以校訓及願景為中心，以六大範疇「PERMA+H」（具人生意義、全情投入、正向情緒、正面成就、身心健康、良好人際關係）建構常規及非常規課程或活動，並培養/發展學生六個「元驍人」品格/性格優勢（感恩、恆心、愛心、開心、信心、獨立自決）。

Centred with our vision and motto, the six domains in the "PERMA+H" framework (positive emotions, engagement, relationships, meaning, accomplishment, and health) are included in developing regular curricula and irregular activities. Six personality/ character strengths as a student of YML (*gratitude, perseverance, care, joy, confidence, and self-reliance*) are expected to be cultivated/ developed.



校園剪影 School Gallery

因新冠肺炎疫情影響，學校於9月下旬才正式回復半天面授課堂；及後再於12月再次因疫情而全面停止面授課節。雖然面授時間不多，但學生也參與了不少活動呢！

In light of the situation of the COVID-19 epidemic, the school resumed face-to-face classes on a half-day basis in late-September and suspended them again in December. Despite the short period of face-to-face classes, students took part in various activities!



服務之星頒獎禮
Award Presentation Ceremony
of "Service Stars"

秋季及冬季生日會
Autumn and Winter Birthday Party



葉志聰同學參加由匡智屯門晨曦學校舉辦的第十一屆「我的廚房」烹飪巡禮，製作菜式是甜心彩虹餅。

Our student joined the cooking competition organised by Hong Chi Morninglight School, Tuen Mun. His dish is Rainbow Biscuits.



家長日 Parents' Day

**2020-2021年度
香港教育大學周年越野跑**
The Education University of Hong Kong
Annual Trail Running 2020-2021



獎項：
融合組個人第三名
黃樂絃同學

融合組團體第一名
黃樂絃同學
李進傑同學
羅境元同學



網上聖誕聯歡會
Online Zoom Christmas Party

編輯小組：顧問：李淑秋校長

成員：文雪琴主任、陳慧海老師、羅敏儀姑娘、余昕寧老師